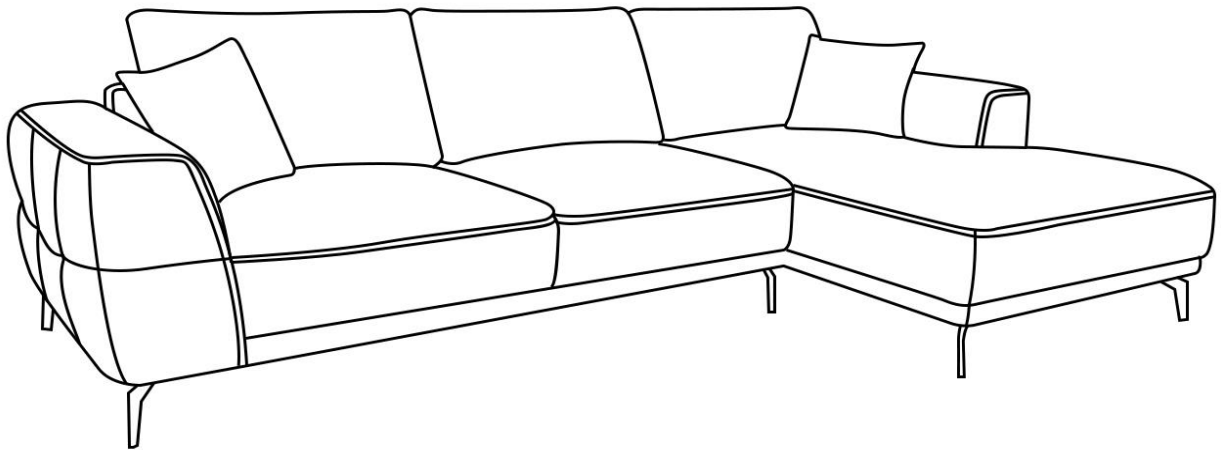
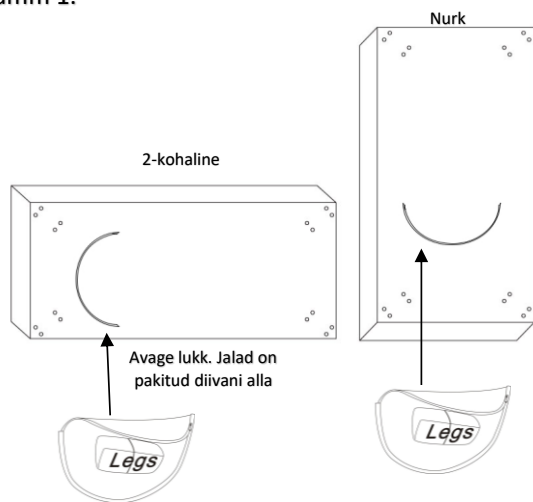


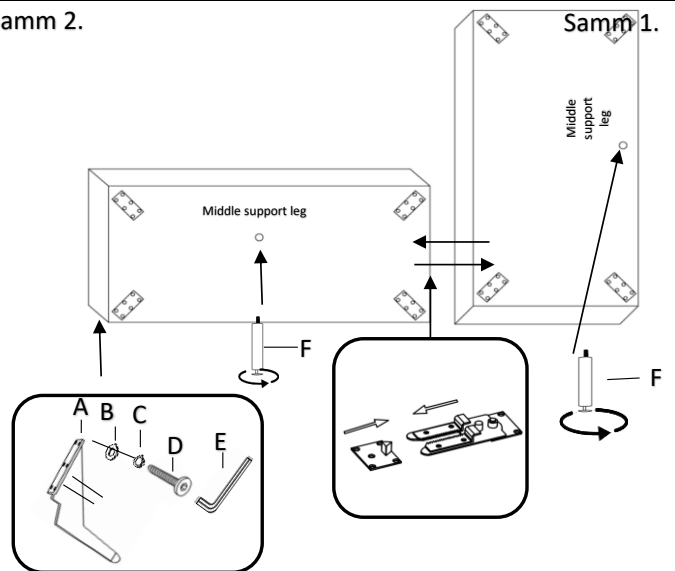
KOKKUPANEKUJUJUHEND



Samm 1.

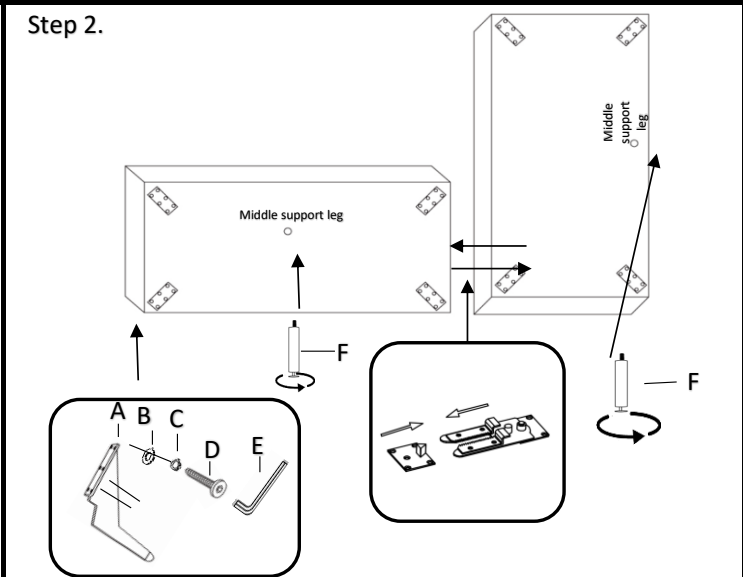
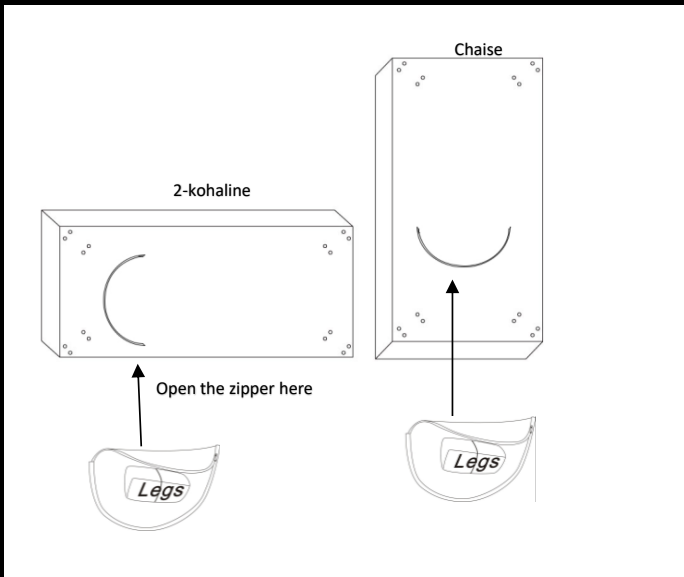
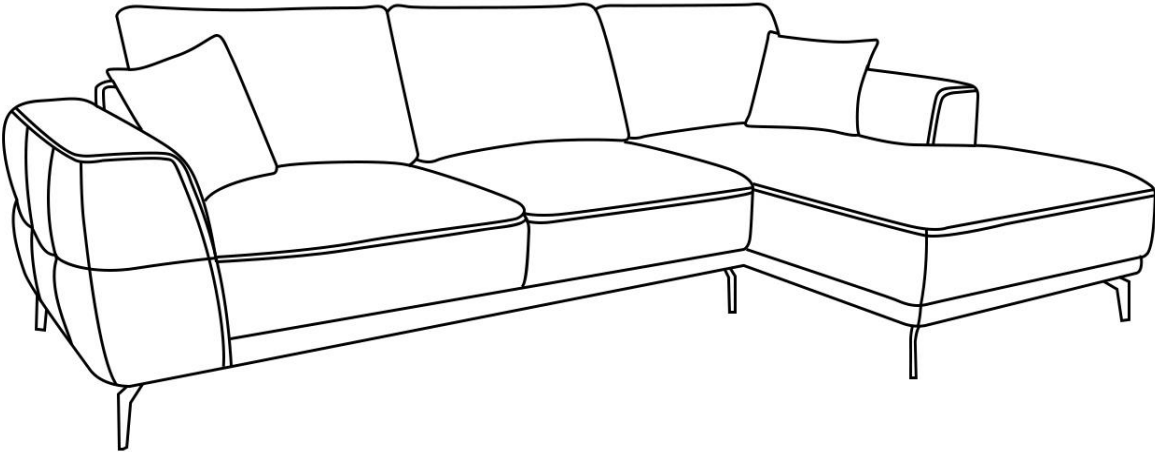


Samm 2.



2-kohaline: 1 TK	Jalg A: 4 TK	Seib B: 16 TK	Veduseib C: 16 TK	Polt D: 16 TK	Võti E: 1 TK	Tugijalg F: 1 TK	Padi F: 2 TK	Padi G: 1 TK
Nurk: 1 TK	Jalg A: 4 TK	Seib B: 16 TK	Veduseib C: 16TK	Polt D: 16 TK	Võti E: 1 TK	Tugijalg F: 1 TK	Padi F: 1 TK	Padi G: 1 TK

ASSEMBLY INSTRUCTION



2 Seater: 1 PC	Leg A: 4 PCS	Flat Washer B: 16 PCS	Spring Washer C: 16 PCS	Bolt D: 16 PCS	Allen Key E: 1 PC	Middle Leg F: 1 PC	Lumbar pillow F: 2 PC	Pillow G: 1 PC
Chaise: 1 PC	Leg A: 4 PCS	Flat Washer B: 16 PCS	Spring Washer C: 16 PCS	Bolt D: 16 PCS	Allen Key E: 1 PC	Middle Leg F: 1 PC	Lumbar pillow F: 1 PC	Pillow G: 1 PC